

Move/3500

Accept any type of payment,
while doing business on-the-go



- Leverage Telium applications on the next-generation payment terminal
- Make NFC payment a seamless consumer experience
- Bring mobile payment to your POS with the most connected terminal

The Move/3500 offers a seamless payment experience while on-the-go. As a best-in-class, pocket-sized portable terminal it complies with future security standards.

Highest security

The Move/3500 is PCI-PTS 5.x certified. Its TELIUM Tetra OS uses the latest cryptographic schemes with future-proof key length.

All payment options

The Move/3500 enables NFC couponing and wallet use cases, in addition to EMV Chip & PIN, swipe and contactless.

User-friendly and intuitive interface

Featuring a large 3.2-inch display, the Move/3500 provides a seamless payment experience.

Designed for mobility

Designed for indoor and outdoor use, the pocket-sized Move/3500 offers extended battery life. It is the perfect business companion for merchants.

Maximized network availability

In one single terminal, Move/3500 proposes a full spectrum wireless connectivity (with 4G, 3G, GPRS, Dual SIM, Bluetooth and WiFi), offering flexibility to merchant in the point of sale, while optimizing communication costs.

Seamless NFC payment

The Move/3500 boosts NFC payment by offering to customers a seamless experience through a dedicated card-reader zone and faster transaction flows.

Secure Telium TETRA OS

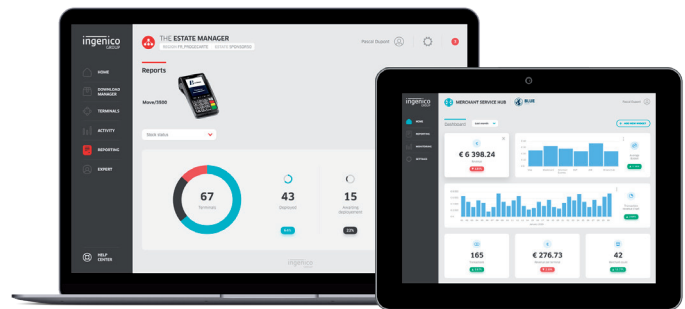
Backed by 40 years of experience and with its user-friendly interface, the Telium TETRA operating system includes the best security mechanisms embedded to protect transaction privacy and leverages Ingenico's unique portfolio of payment applications.

Compatible with Ingenico's suite of services

Keeping the solutions connected, the Move/3500 works in unison with Ingenico's supporting service platforms, meaning merchants will have access to business services such as back office reporting and e-receipt management. Software updates and day-to-day support deliver a hassle-free experience.



The Move/3500 is supported by our Cloud Services



Processor	• Application & Crypto processor	• Cortex A5	•
Memory	• Internal • External	• 256 MB Flash, 128 MB RAM • 512 MB Flash, 128 MB RAM • MicroSD up to 32GB	• • Option • Option
OS		• Telium TETRA	•
SIM		• 2 SIM	• Option
SAM		• 2 SAM • 3rd SAM	• • Option
Card readers	• Magstripe • Smart card • NFC/Contactless	• ISO 1/2/3, 500K lifespan • EMV Level 1, 500K lifespan • EMV Level 1 compliant	• • • Option
Data capture	• GPS	• GPS tracking	• Option
Display	• Colour	• 3.2" backlit, QVGA (320x240 pixels)	•
Keypad		• 20 keys, raised marking, backlit	•
Audio	• Buzzer		•

Thermal Printer	• Speed in lines/s • Paper roll cage	• up to 30 lines/s • 58 mm width x Ø 40 mm	• •
Terminal connectivity	• WAN • LAN • Multicom	• 4G and/or 3G and/or GPRS • WiFi and/or Bluetooth • WAN + LAN	• Option • Option • Option
Terminal connections	• USB	• Host & Slave • Dedicated power Jack	• •
Battery	• Li-ion	• 2200mAh • 2900mAh	• • Option
Terminal size		• 169x78x57 mm (6.6x3.1x2.2")	•
Weight	• Terminal + Battery	• 320 g (11 oz)	•
Environment	• Operating Temperature • Storage Temperature • Operating Humidity	• -10°C to +40°C (14°F to 104°F) • -20°C to +55°C (-4°F to 131°F) • 85% non-condensing at +40°C (104°F)	• • •
Accessory	• Privacy shield • Car Charger • Docking-station	• Factory Mounted • Charger • 2 RS232 • USB Host • USB Slave • Modem • Ethernet 10/100 Base T • Bluetooth	• Option • Option • Option • Option • Option • Option
Security		• PCI PTS 5.x & 4.x online & offline certified	•



www.ingenico.com

ingenico
a Worldline brand